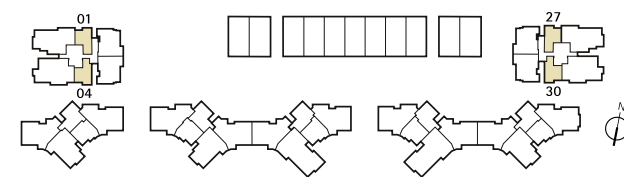
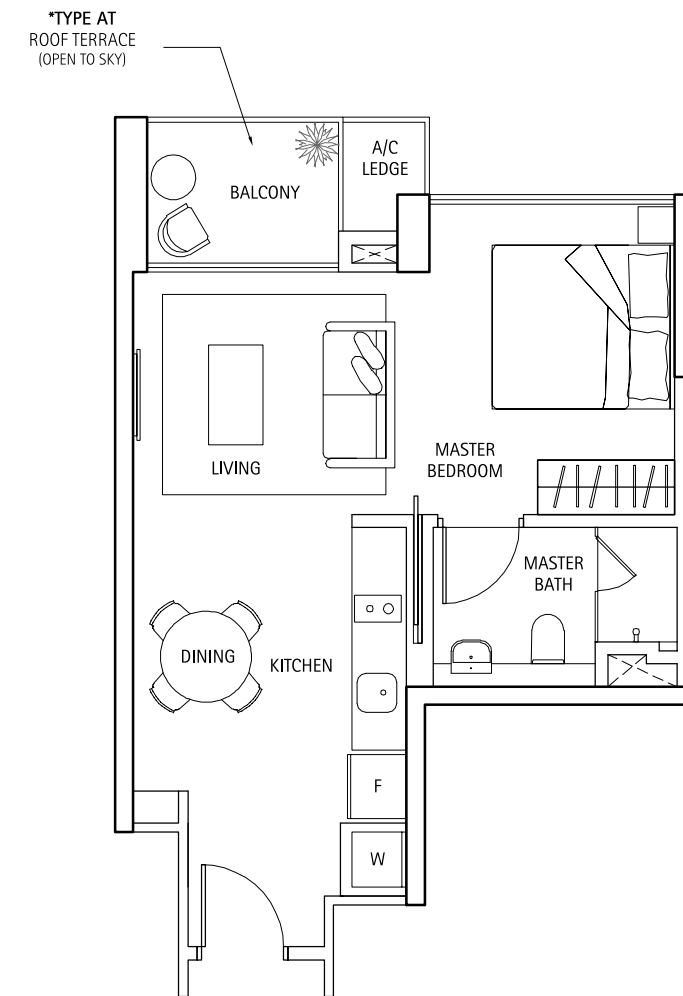


Type A/AT* (1 Bedroom)

45 sq m / 484 sq ft

#03-01 to #19-01, #02-04 to #19-04,
#02-27 to #18-27, #02-30 to #18-30,

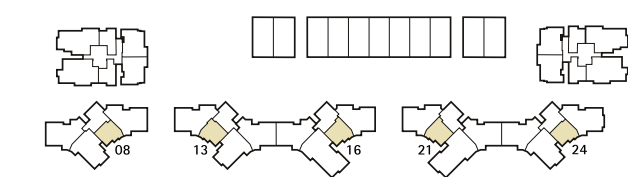
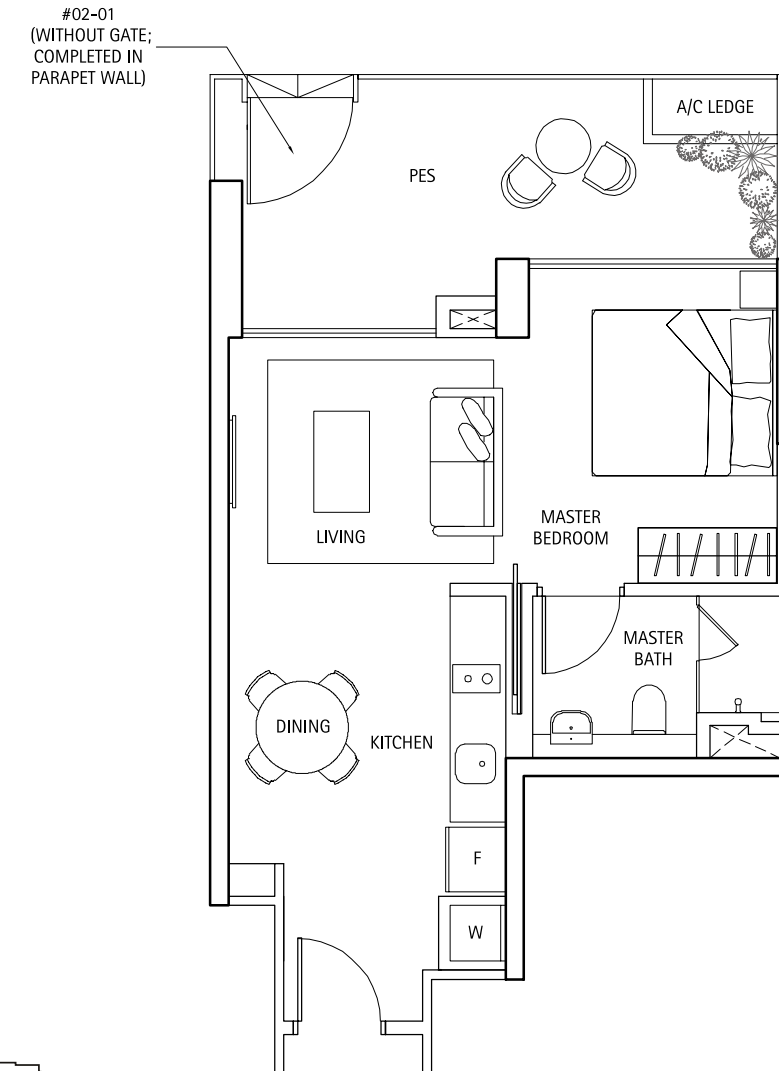
*#20-01, *#20-04, *#19-27, *#19-30



Type AG (1 Bedroom)

54 sq m / 581 sq ft

#02-01, #01-04, #01-27, #01-30



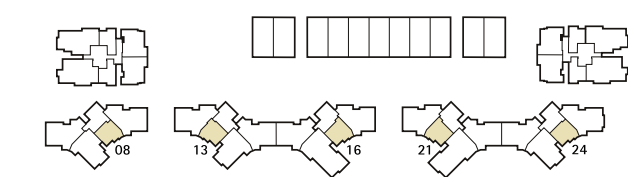
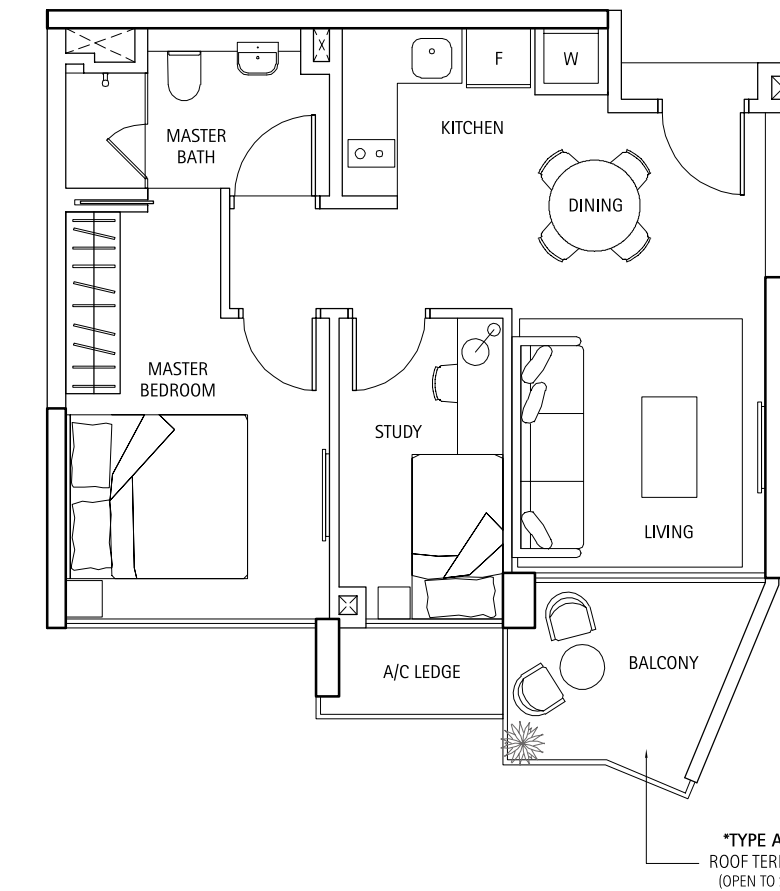
The plans are subject to change as may be required or approved by the relevant authorities. Areas are estimates only and are subject to final survey. Plans are not drawn to scale.

Type A1/A1T* (1+1 Bedroom)

58 sq m / 624 sq ft

#02-08 to #19-08, #02-13 to #19-13,
#08-16 to #19-16, #08-21 to #18-21,
#02-24 to #18-24

*#20-08, *#20-13, *#20-16, *#19-21, *#19-24

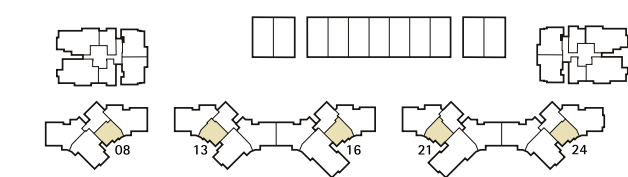
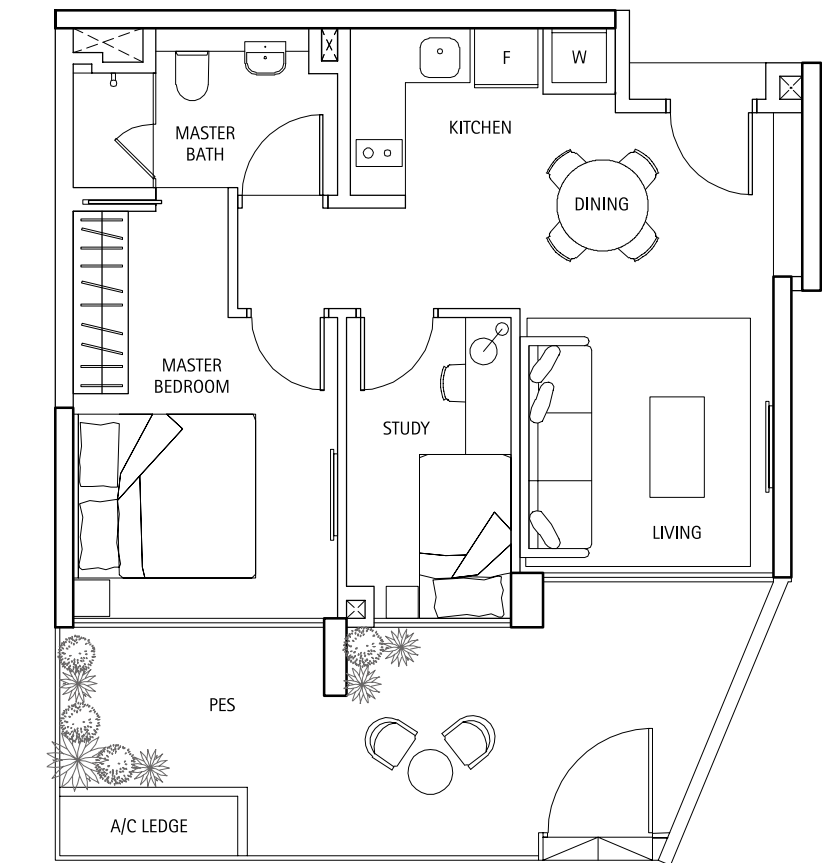


The plans are subject to change as may be required or approved by the relevant authorities. Areas are estimates only and are subject to final survey. Plans are not drawn to scale.

Type A1G (1+1 Bedroom)

70 sq m / 753 sq ft

#01-08, #01-13, #01-24

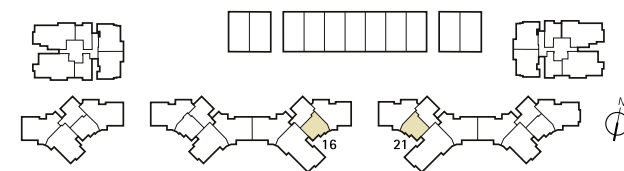
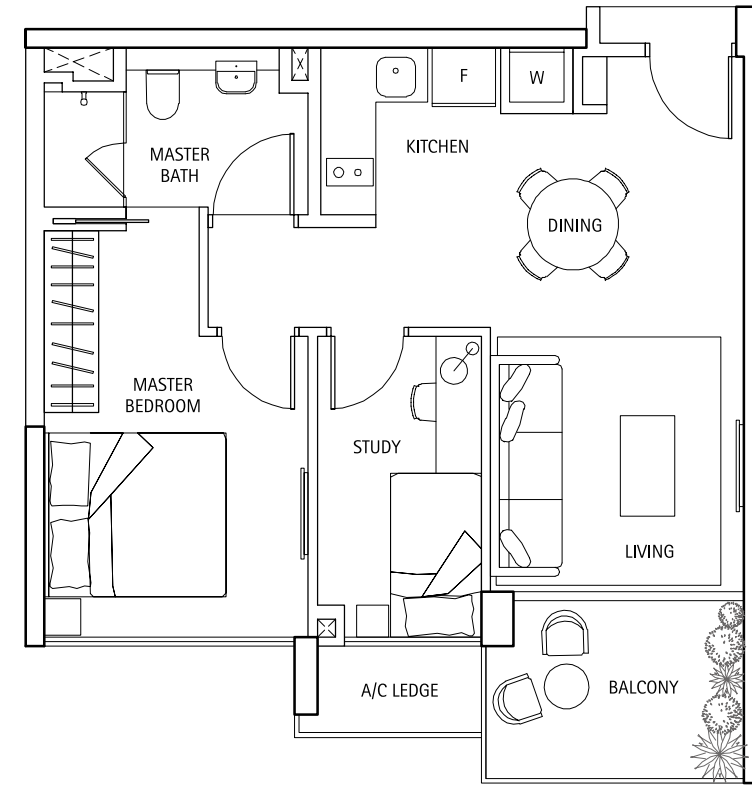


The plans are subject to change as may be required or approved by the relevant authorities. Areas are estimates only and are subject to final survey. Plans are not drawn to scale.

Type A1a (1+1 Bedroom)

59 sq m / 635 sq ft

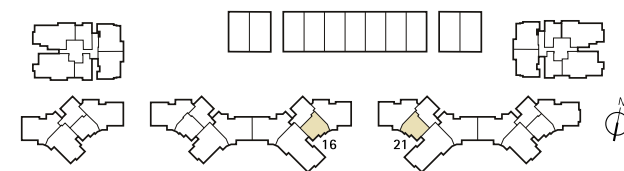
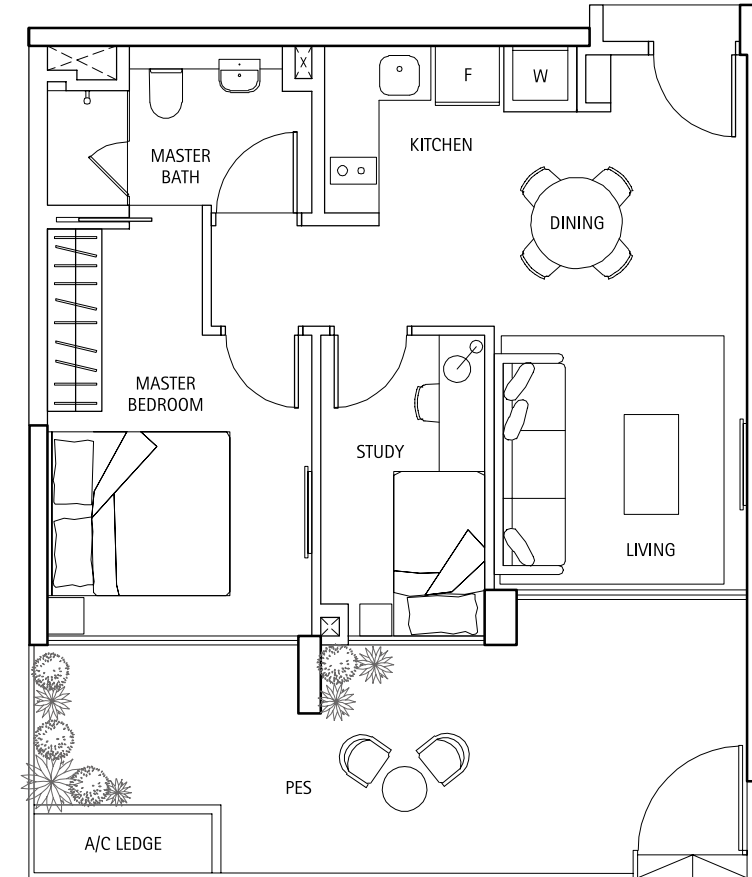
#02-16 to #07-16, #02-21 to #07-21



Type A1aG (1+1 Bedroom)

73 sq m / 786 sq ft

#01-16, #01-21



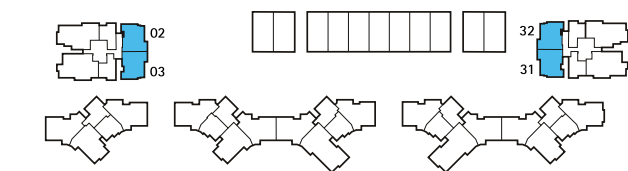
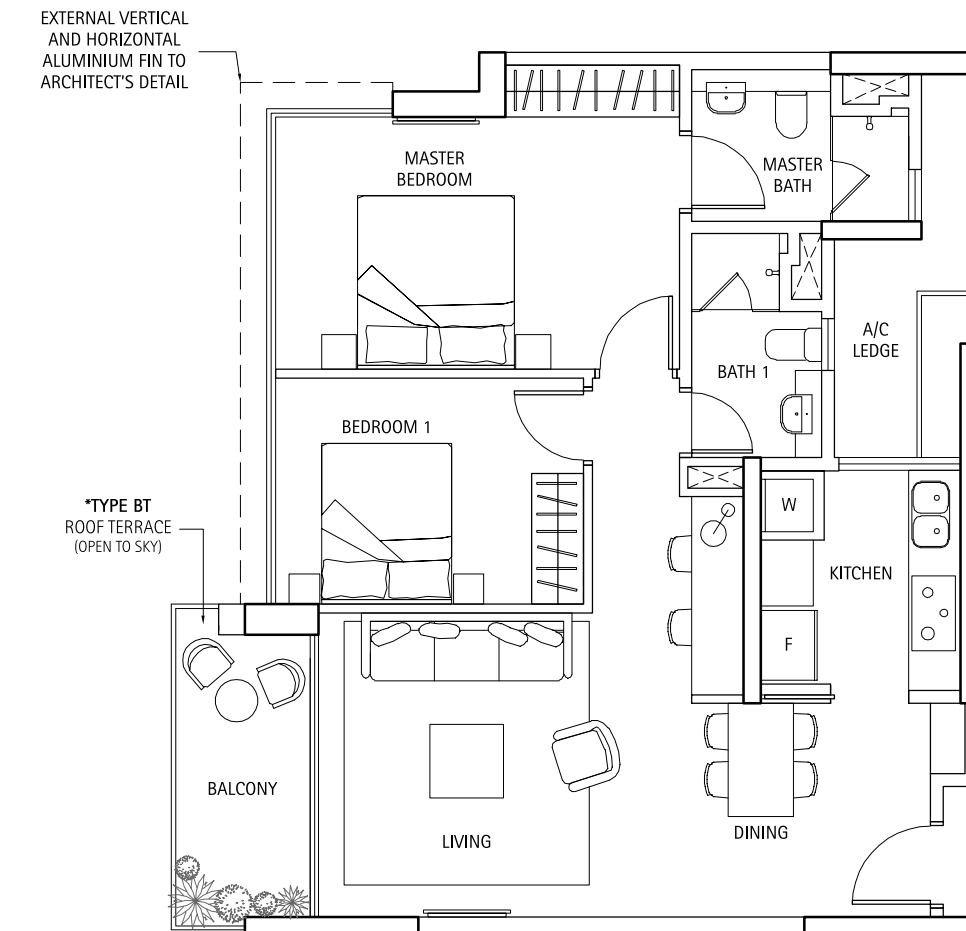
The plans are subject to change as may be required or approved by the relevant authorities. Areas are estimates only and are subject to final survey. Plans are not drawn to scale.

Type B/BT* (2 Bedroom)

82 sq m / 883 sq ft

#02-02 to #19-02, #02-03 to #19-03,
#02-31 to #18-31, #02-32 to #18-32

*#20-02, *#20-03, *#19-31, *#19-32

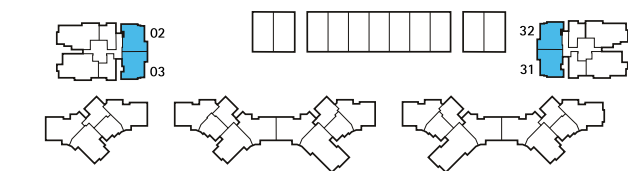
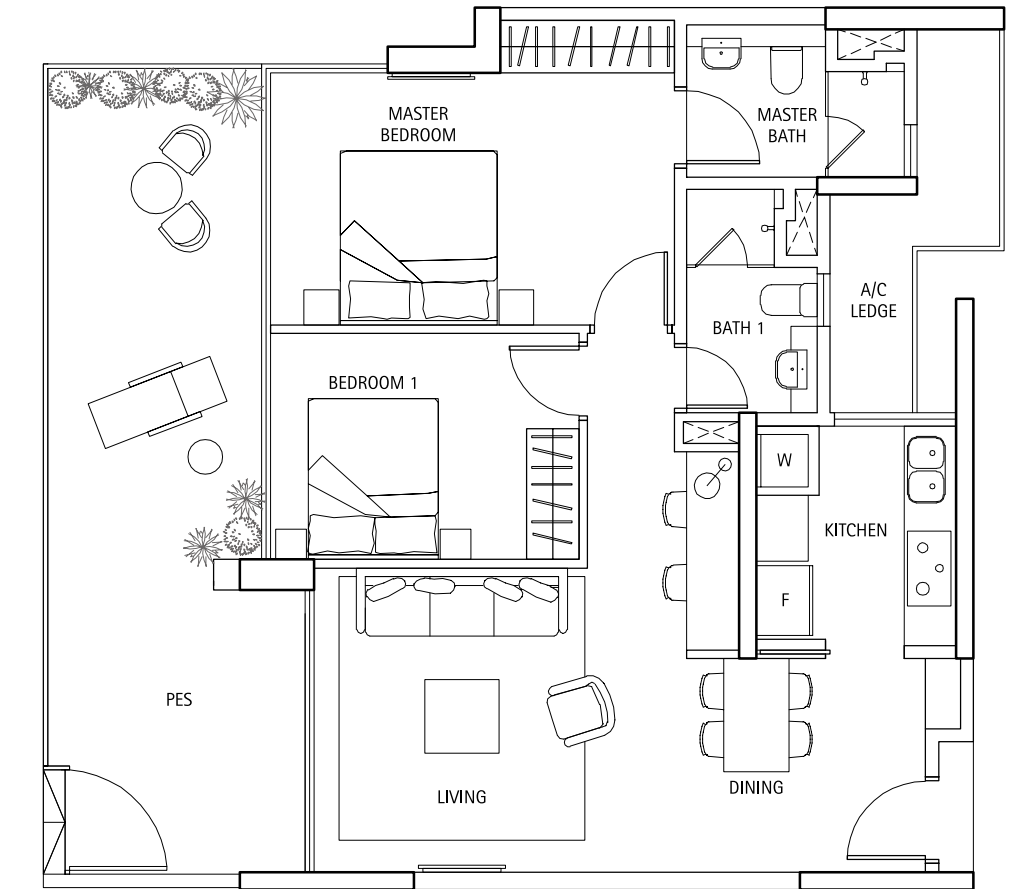


The plans are subject to change as may be required or approved by the relevant authorities. Areas are estimates only and are subject to final survey. Plans are not drawn to scale.

Type BG (2 Bedroom)

101 sq m / 1,087 sq ft

#01-02, #01-03, #01-31, #01-32

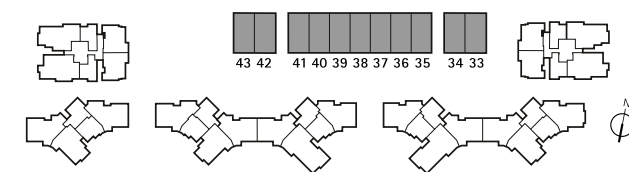
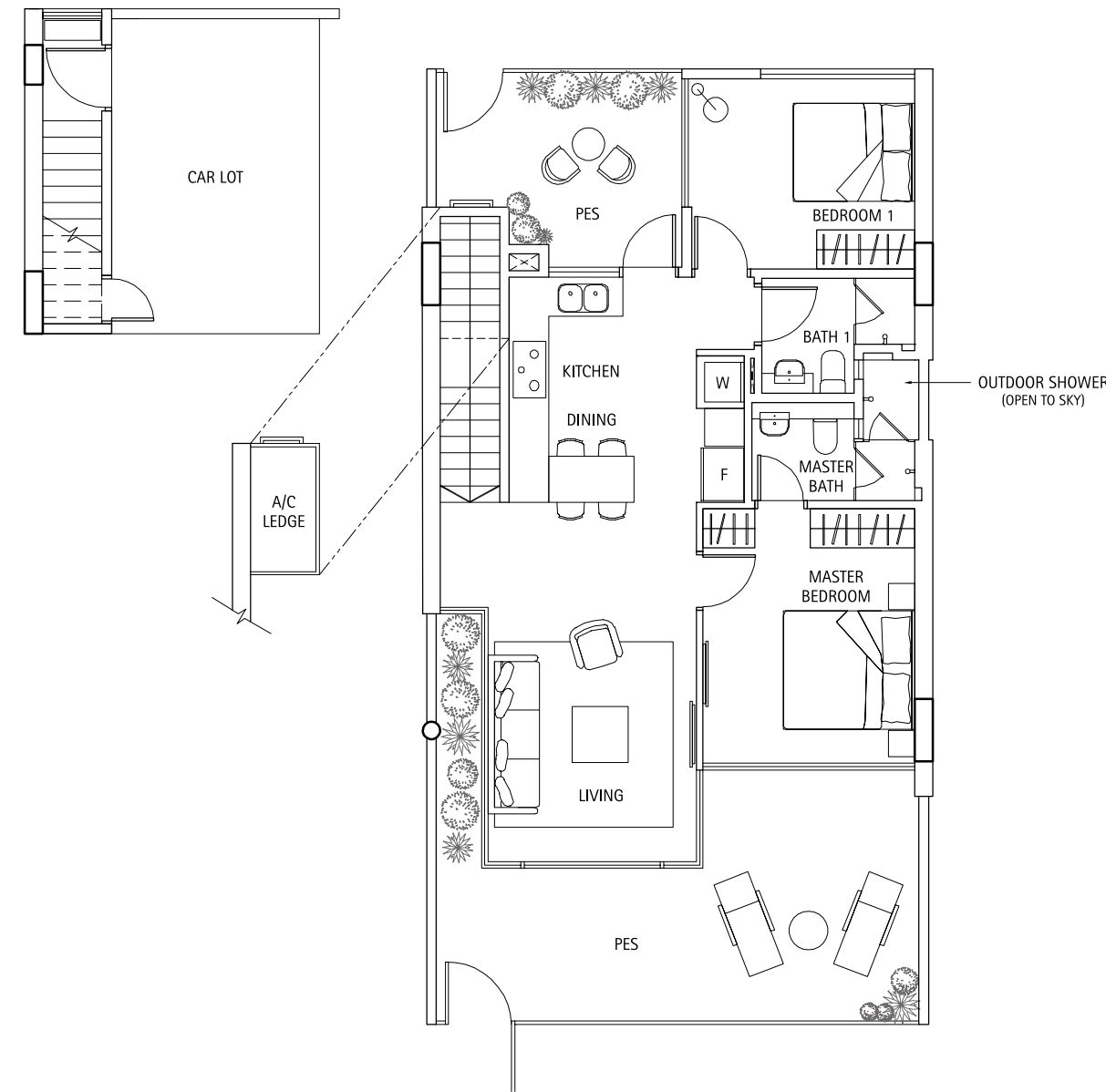


The plans are subject to change as may be required or approved by the relevant authorities. Areas are estimates only and are subject to final survey. Plans are not drawn to scale.

Type C (2 Bedroom)

132 sq m / 1,421 sq ft

#06-33 to #06-43

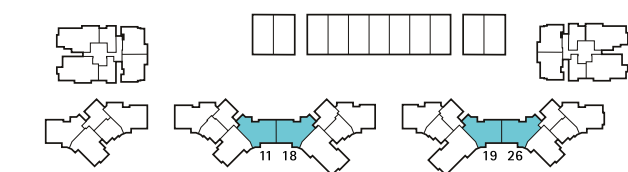
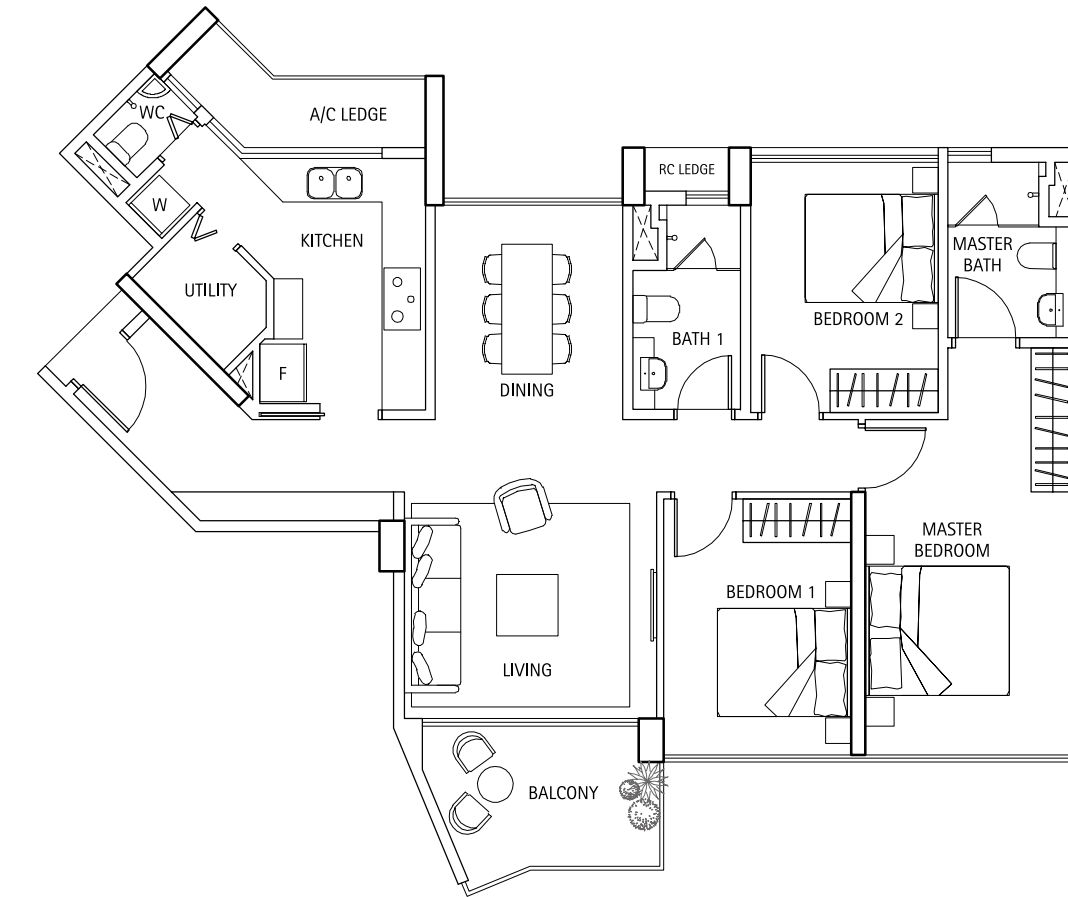


The plans are subject to change as may be required or approved by the relevant authorities. Areas are estimates only and are subject to final survey. Plans are not drawn to scale.

Type D (3 Bedroom)

106 sq m / 1,141 sq ft

#02-11 to #19-11, #02-18 to #19-18,
#02-19 to #18-19, #02-26 to #18-26

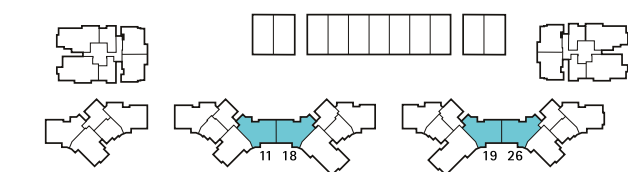
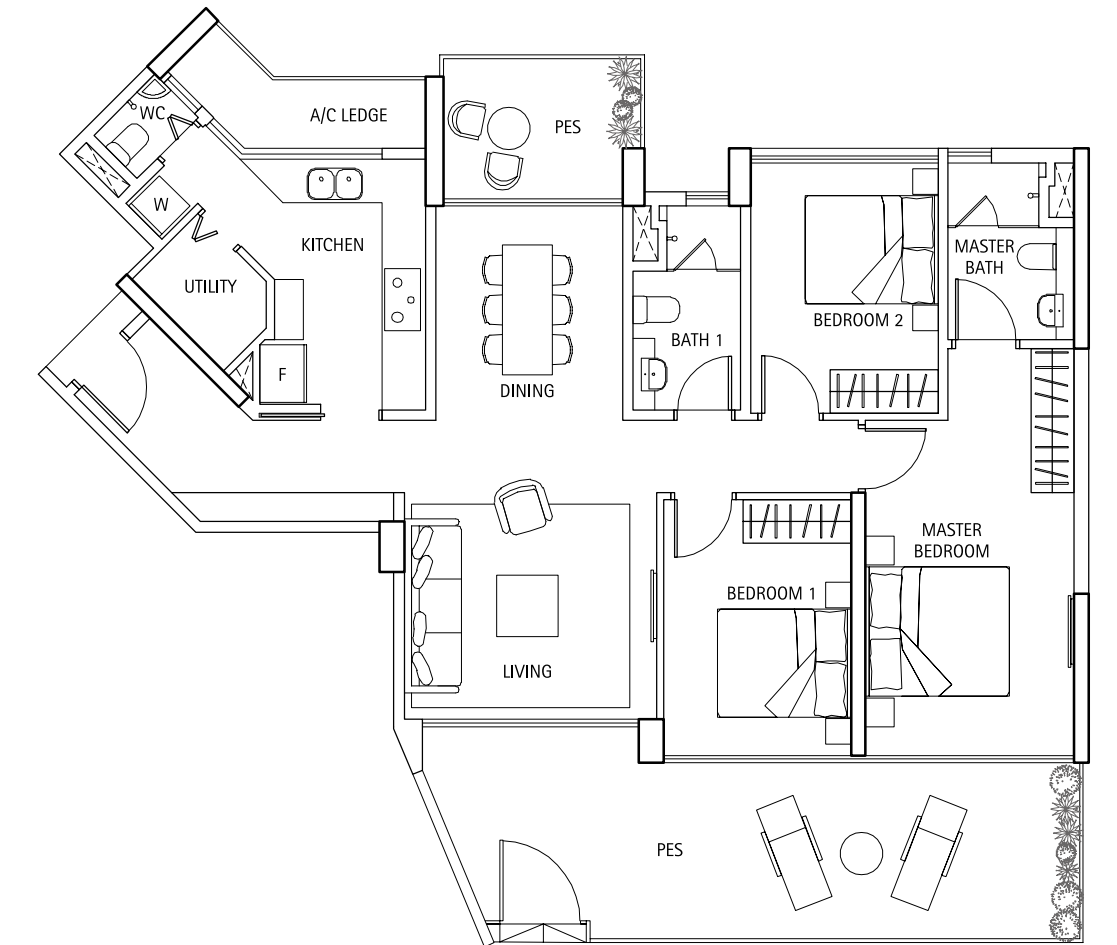


The plans are subject to change as may be required or approved by the relevant authorities. Areas are estimates only and are subject to final survey. Plans are not drawn to scale.

Type DG (3 Bedroom)

129 sq m / 1,389 sq ft

#01-11, #01-18, #01-19, #01-26

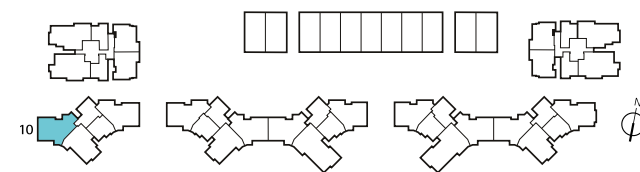
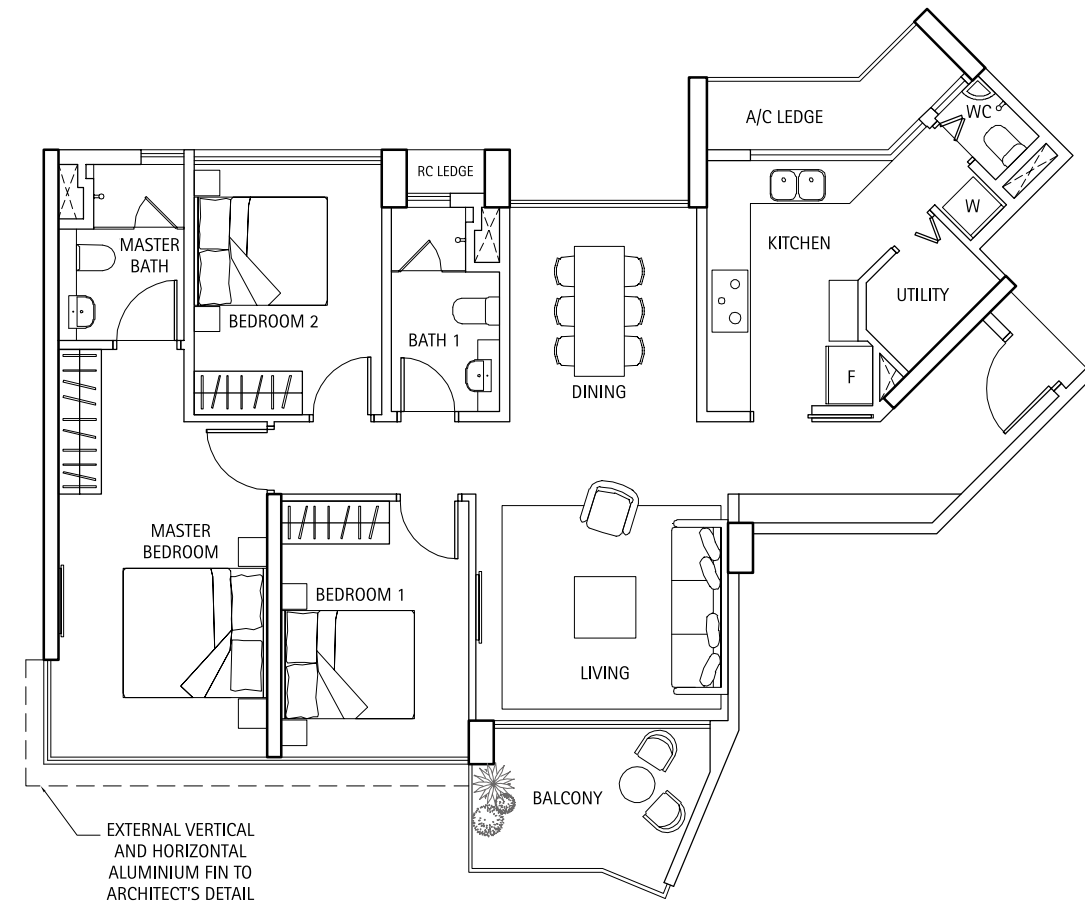


The plans are subject to change as may be required or approved by the relevant authorities. Areas are estimates only and are subject to final survey. Plans are not drawn to scale.

Type D1 (3 Bedroom)

107 sq m / 1,152 sq ft

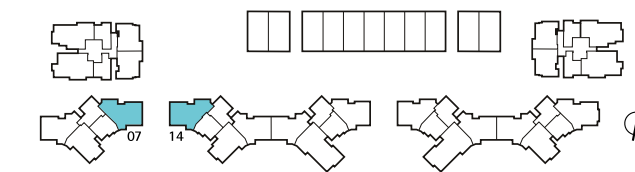
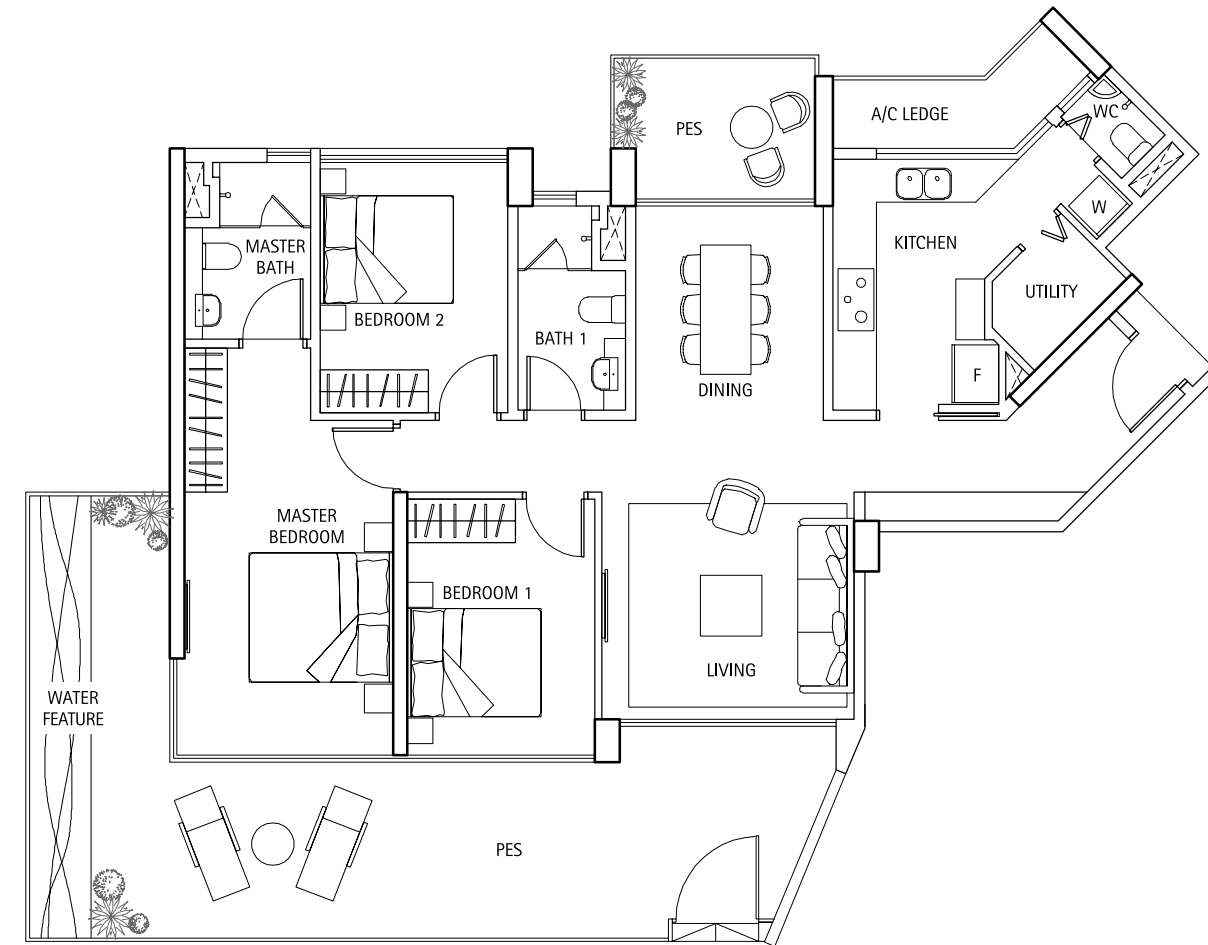
#02-10 to #19-10



Type D1G (3 Bedroom)

142 sq m / 1,528 sq ft

#01-10



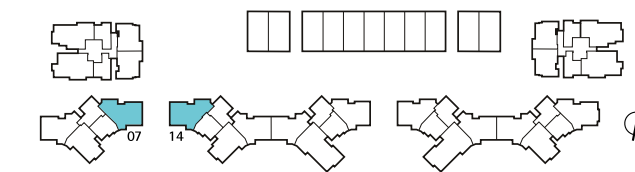
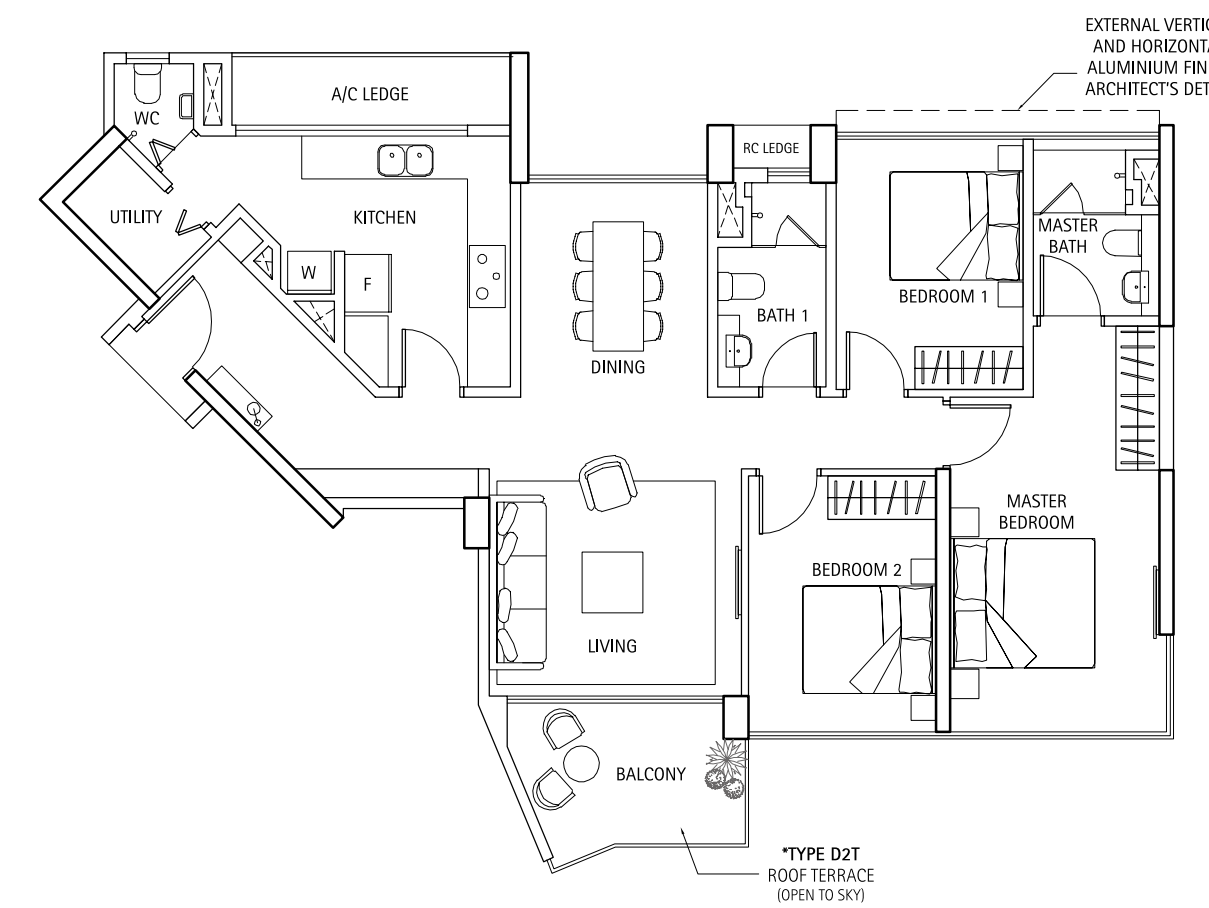
The plans are subject to change as may be required or approved by the relevant authorities. Areas are estimates only and are subject to final survey. Plans are not drawn to scale.

Type D2/D2T* (3 Bedroom)

110 sq m / 1,184 sq ft

#02-07 to #19-07, #02-14 to #19-14

*#20-07, *#20-14

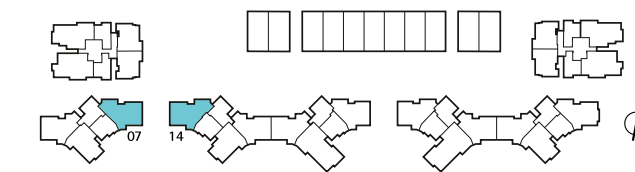
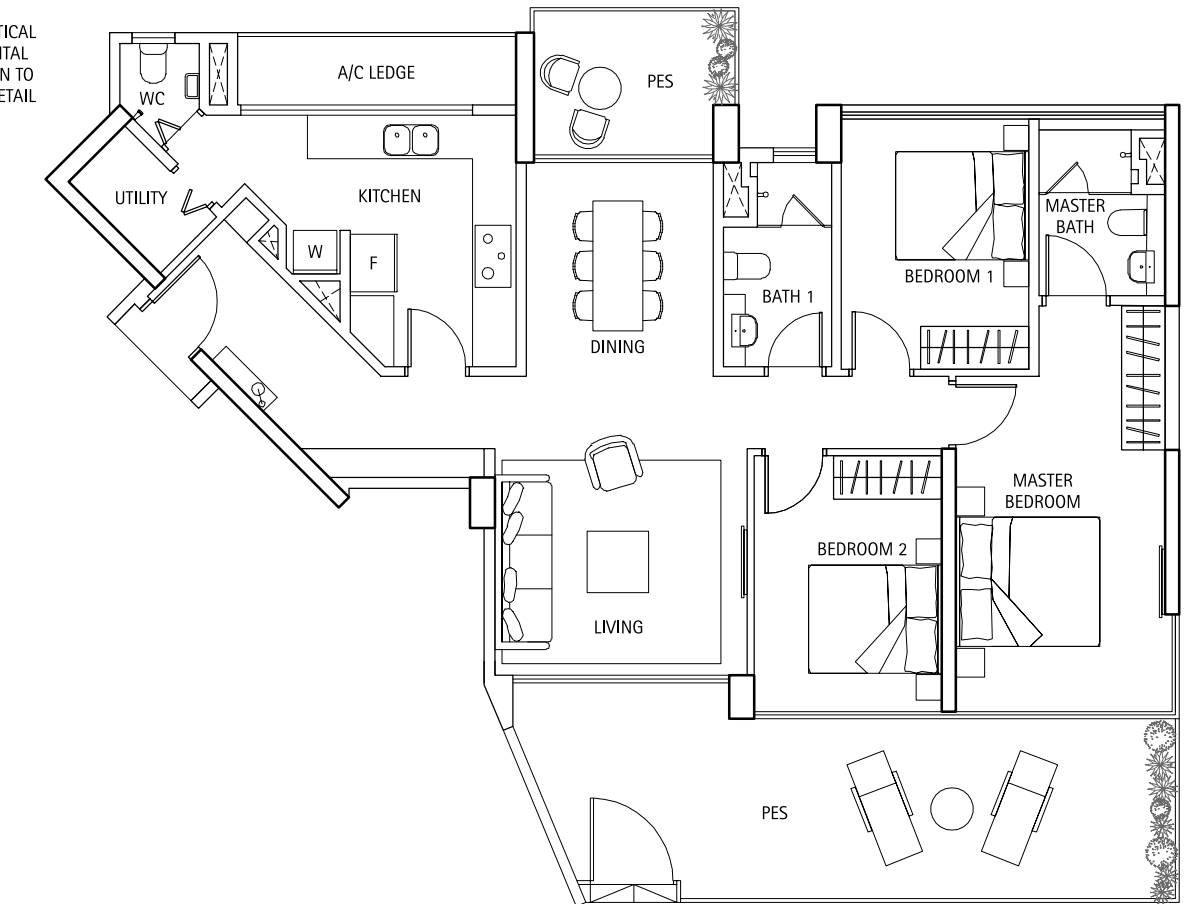


The plans are subject to change as may be required or approved by the relevant authorities. Areas are estimates only and are subject to final survey. Plans are not drawn to scale.

Type D2G (3 Bedroom)

133 sq m / 1,432 sq ft

#01-07, #01-14



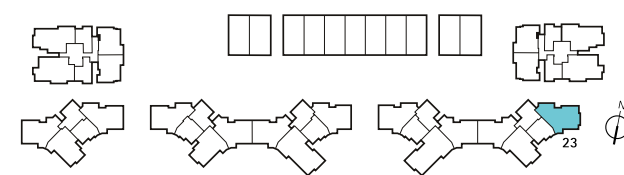
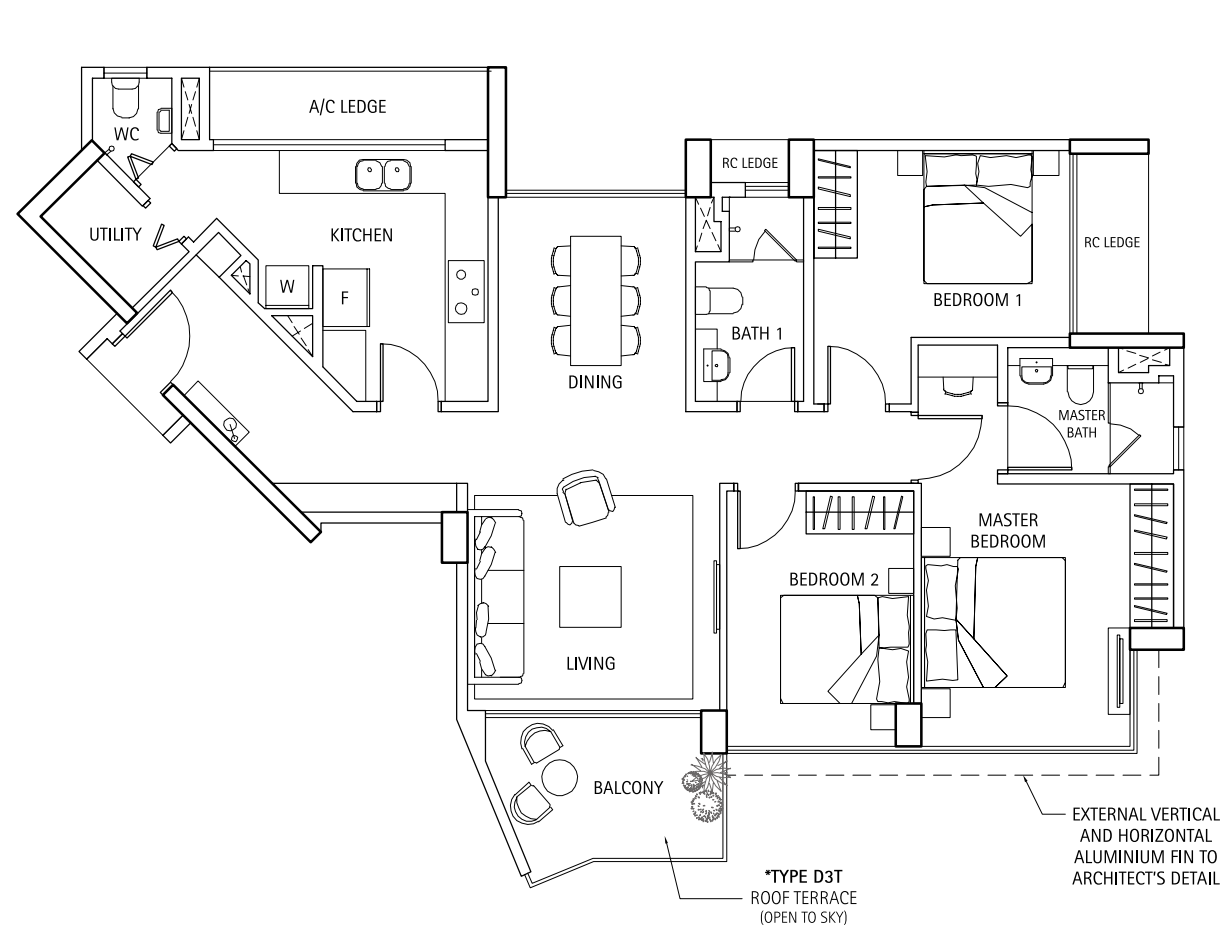
The plans are subject to change as may be required or approved by the relevant authorities. Areas are estimates only and are subject to final survey. Plans are not drawn to scale.

Type D3/D3T* (3 Bedroom)

109 sq m / 1,173 sq ft

#02-23 to #18-23

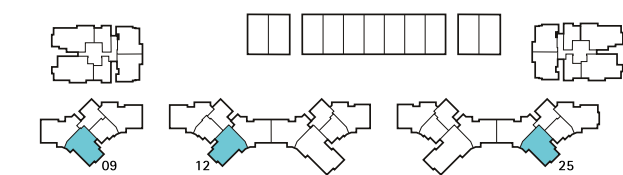
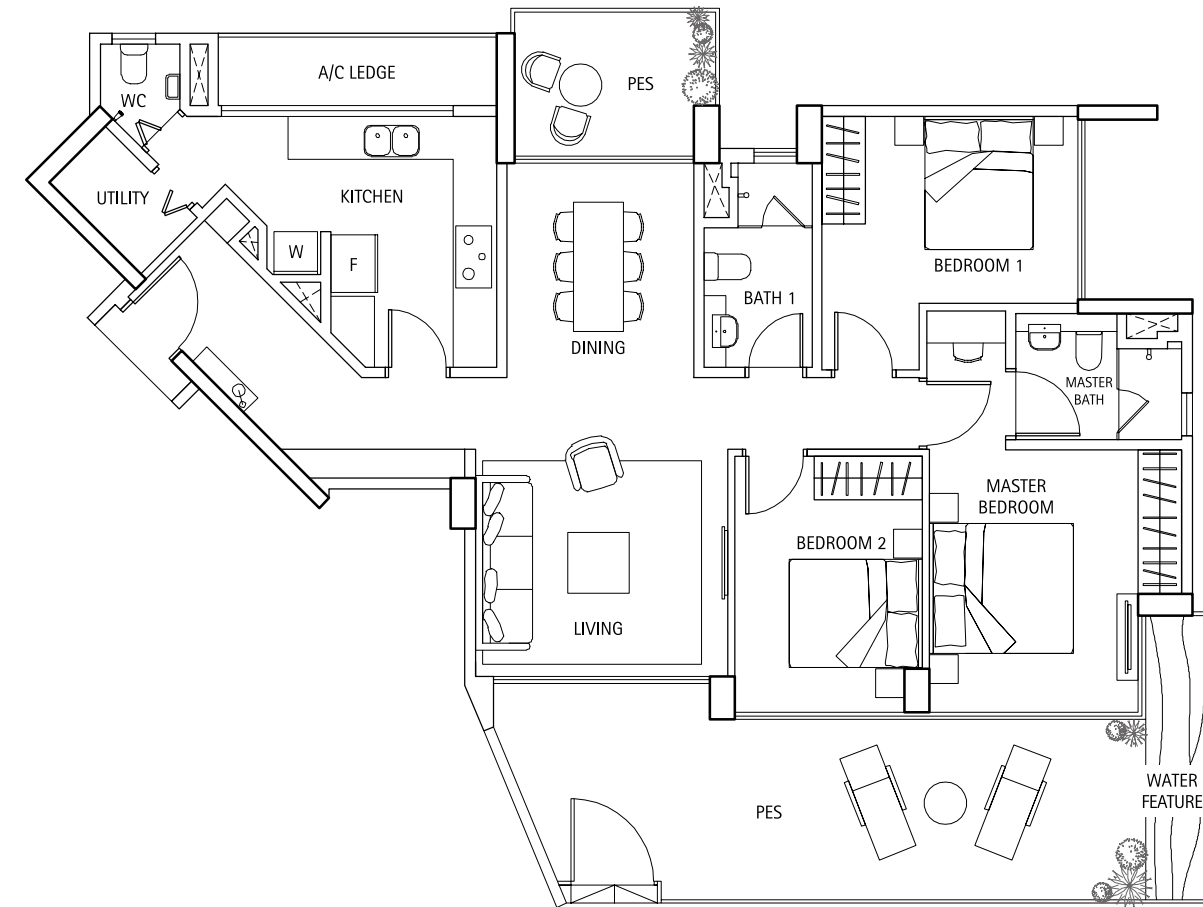
*#19-23



Type D3G (3 Bedroom)

136 sq m / 1,464 sq ft

#01-23

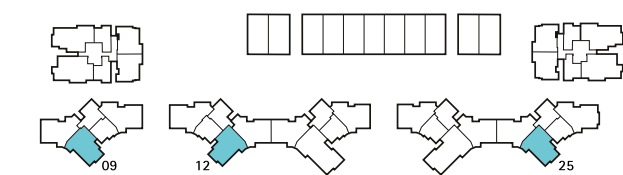
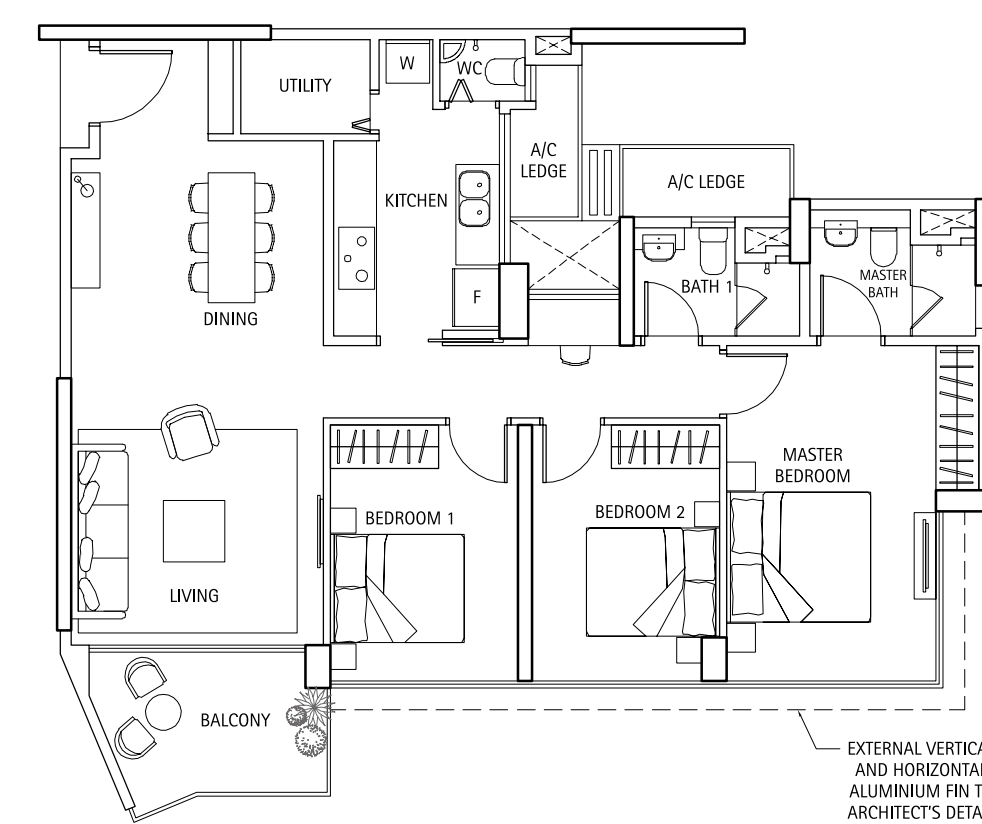


The plans are subject to change as may be required or approved by the relevant authorities. Areas are estimates only and are subject to final survey. Plans are not drawn to scale.

Type D4 (3 Bedroom)

105 sq m / 1,130 sq ft

#02-09 to #19-09, #02-12 to #19-12,
#02-25 to #18-25

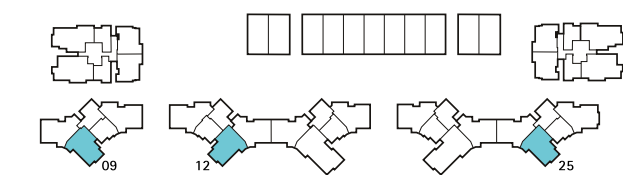
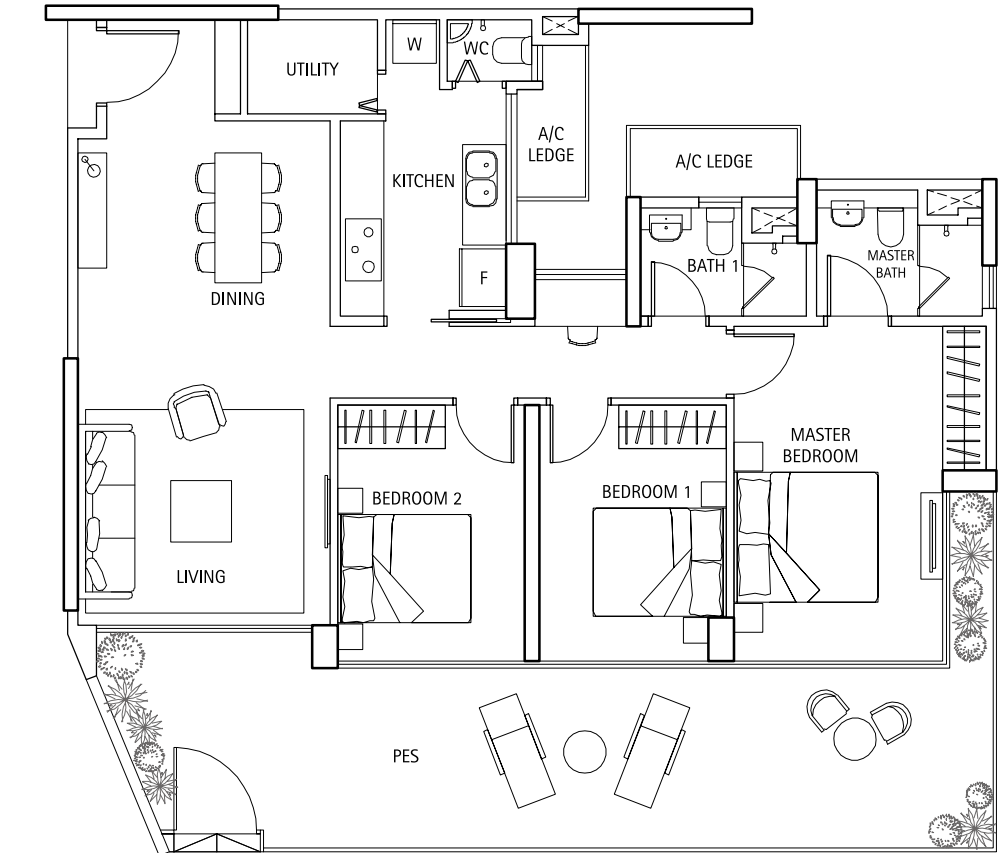


The plans are subject to change as may be required or approved by the relevant authorities. Areas are estimates only and are subject to final survey. Plans are not drawn to scale.

Type D4G (3 Bedroom)

133 sq m / 1,432 sq ft

#01-09, #01-12, #01-25



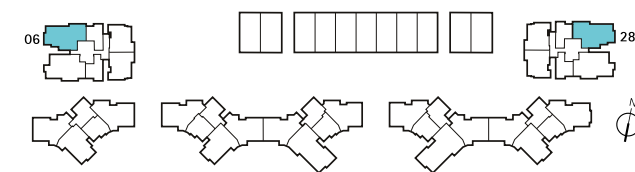
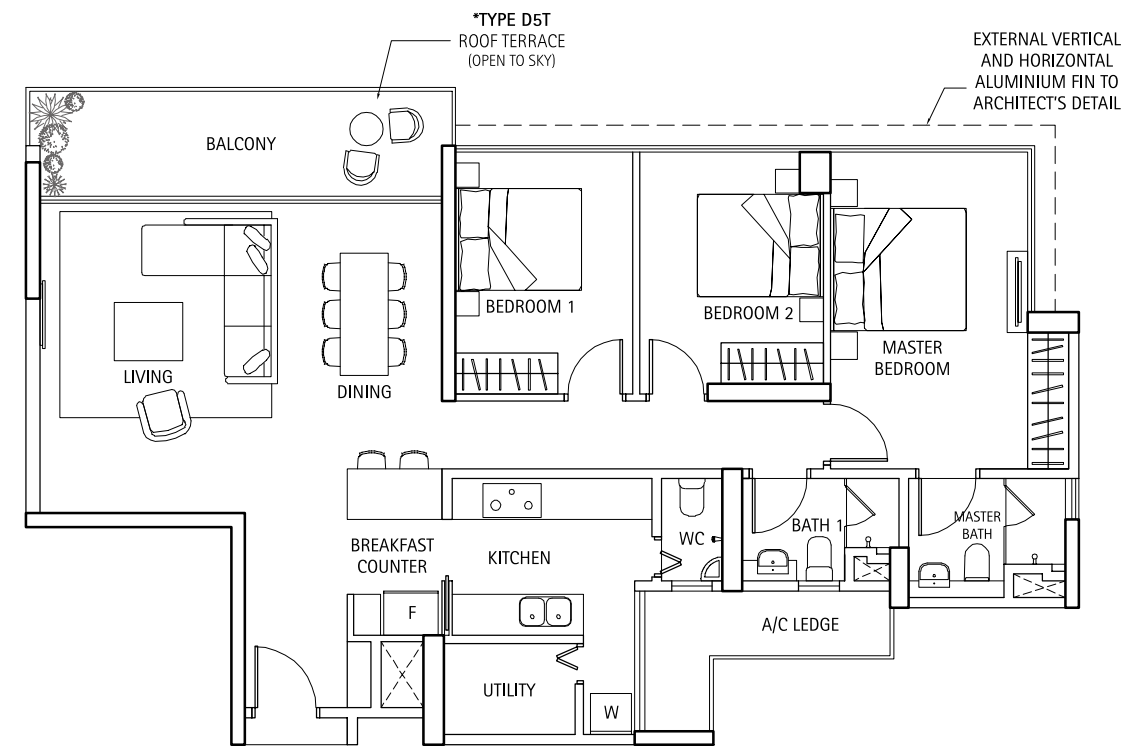
The plans are subject to change as may be required or approved by the relevant authorities. Areas are estimates only and are subject to final survey. Plans are not drawn to scale.

Type D5/D5T* (3 Bedroom)

117 sq m / 1,259 sq ft

#03-06 to #19-06, #02-28 to #18-28

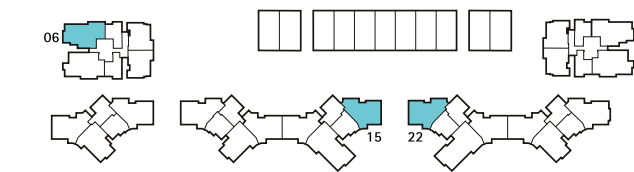
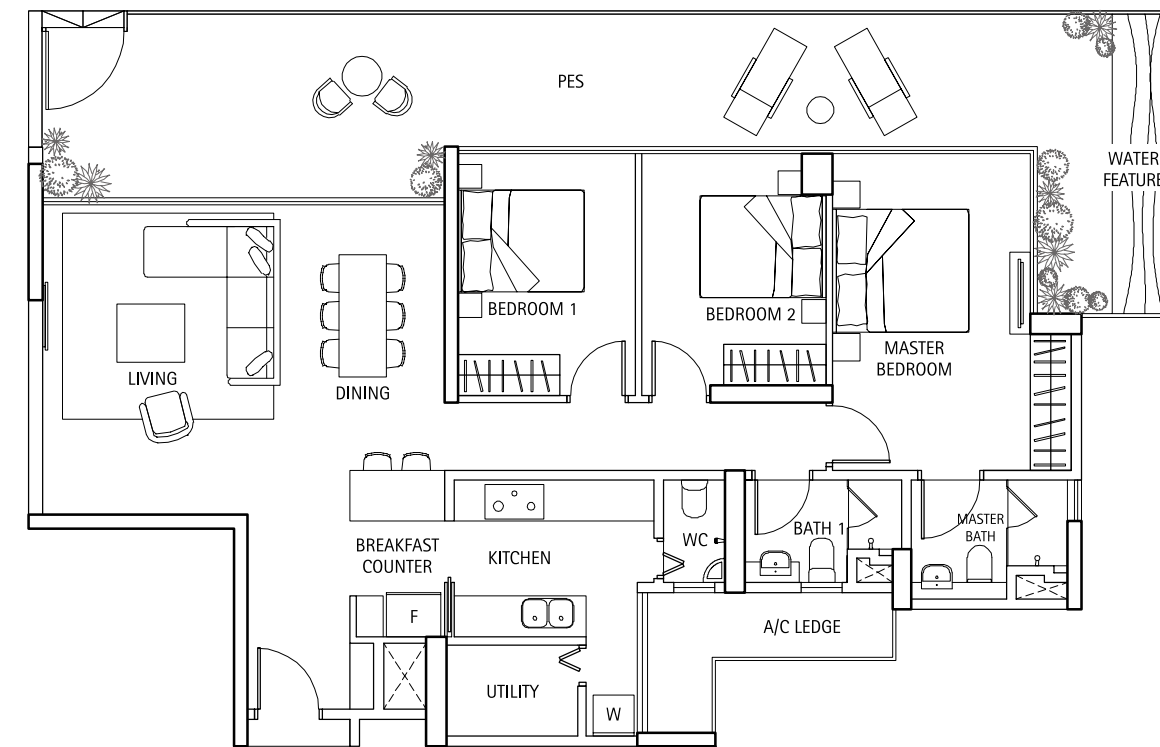
*#20-06, *#19-28



Type D5G (3 Bedroom)

150 sq m / 1,615 sq ft

#01-28

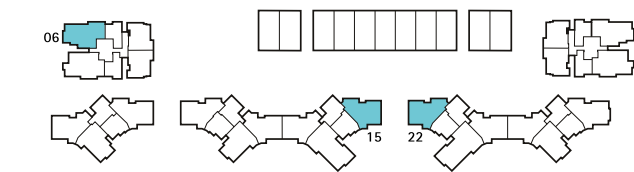
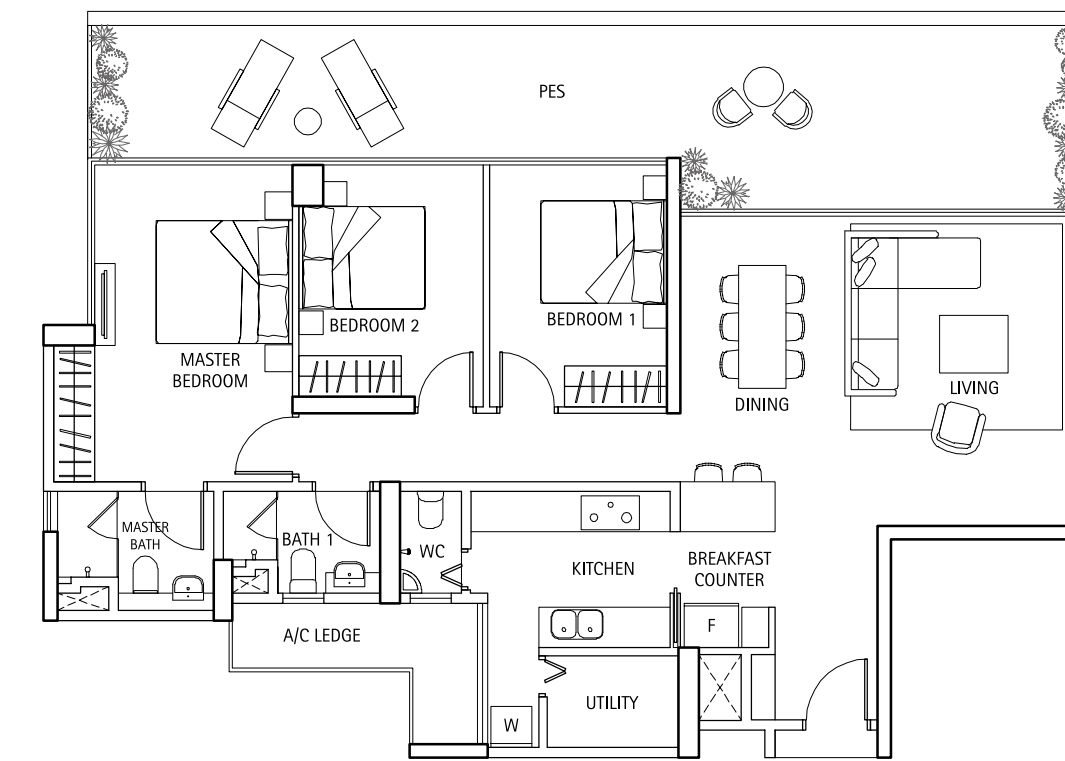


The plans are subject to change as may be required or approved by the relevant authorities. Areas are estimates only and are subject to final survey. Plans are not drawn to scale.

Type D5aG (3 Bedroom)

142 sq m / 1,528 sq ft

#02-06



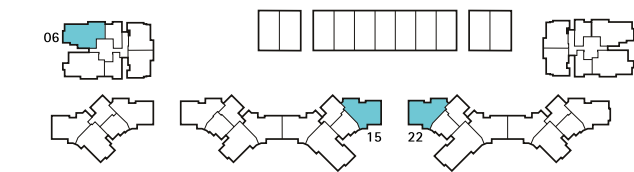
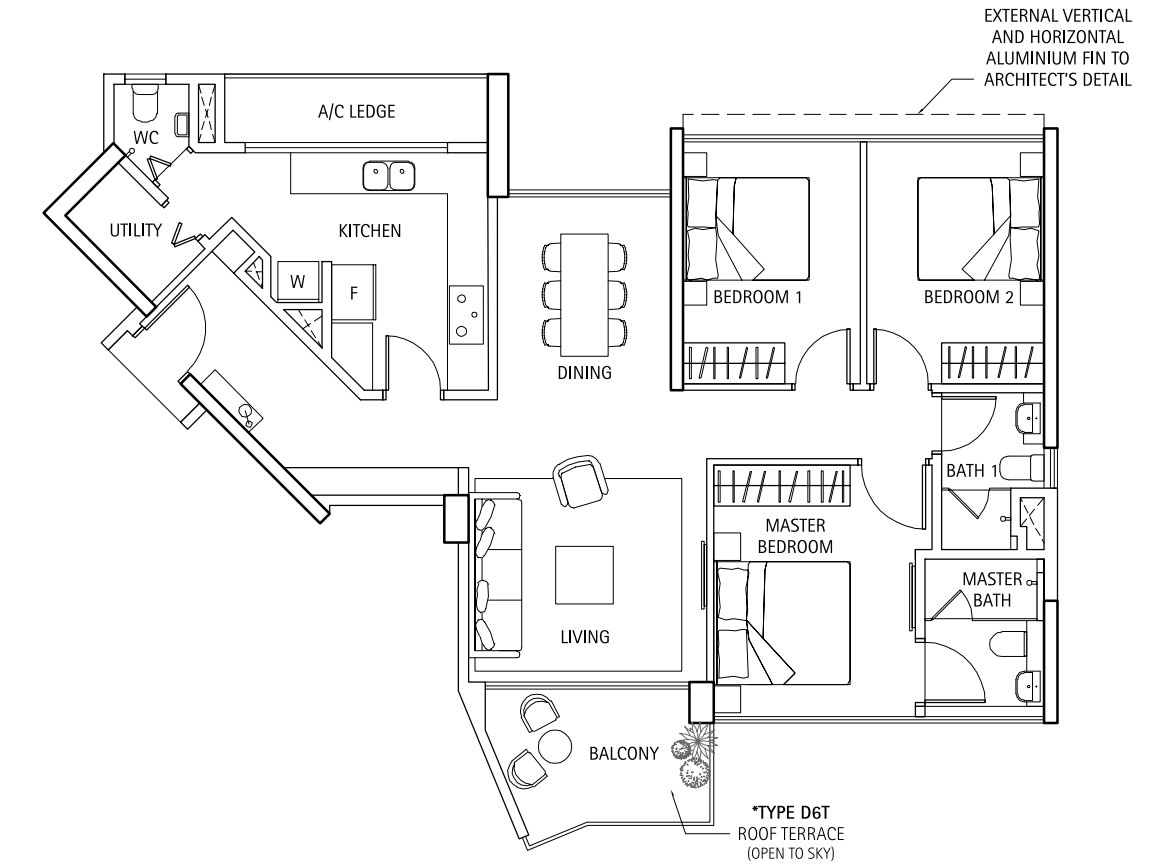
The plans are subject to change as may be required or approved by the relevant authorities. Areas are estimates only and are subject to final survey. Plans are not drawn to scale.

Type D6/D6T* (3 Bedroom)

106 sq m / 1,141 sq ft

#08-15 to #19-15, #08-22 to #18-22

*#20-15, *#19-22



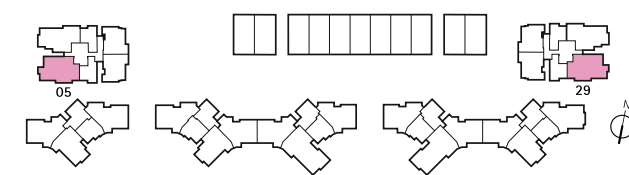
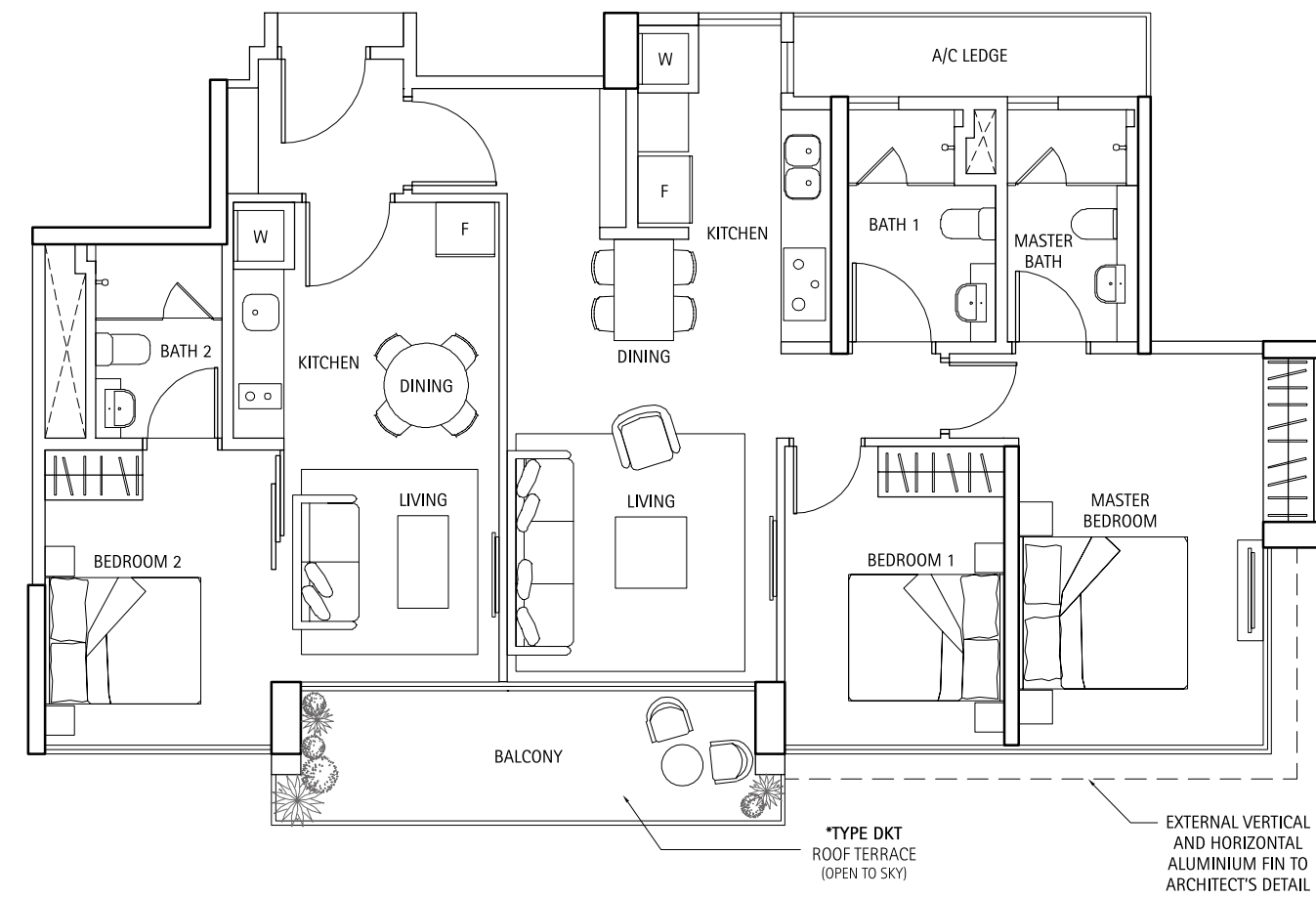
The plans are subject to change as may be required or approved by the relevant authorities. Areas are estimates only and are subject to final survey. Plans are not drawn to scale.

Type DK/DKT* (Dual Key)

119 sq m / 1,281 sq ft

#02-05 to #19-05, #02-29 to #18-29

*#20-05, *#19-29

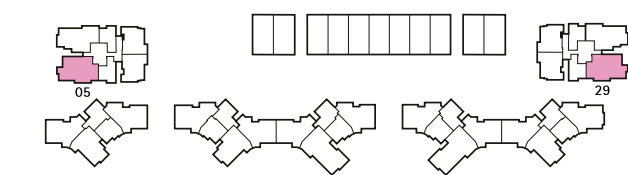
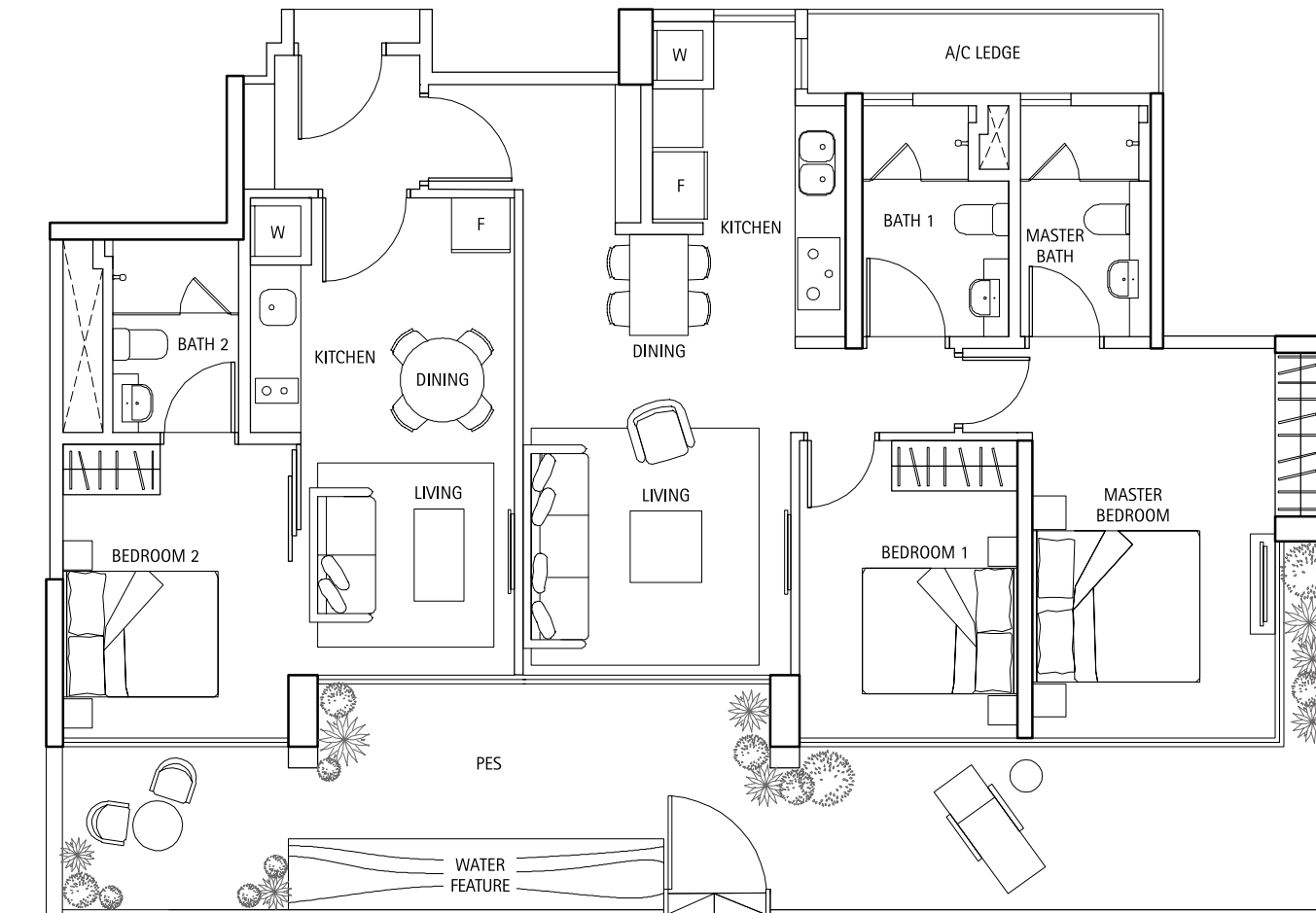


The plans are subject to change as may be required or approved by the relevant authorities. Areas are estimates only and are subject to final survey. Plans are not drawn to scale.

Type DKG (Dual Key)

146 sq m / 1,572 sq ft

#01-05, #01-29

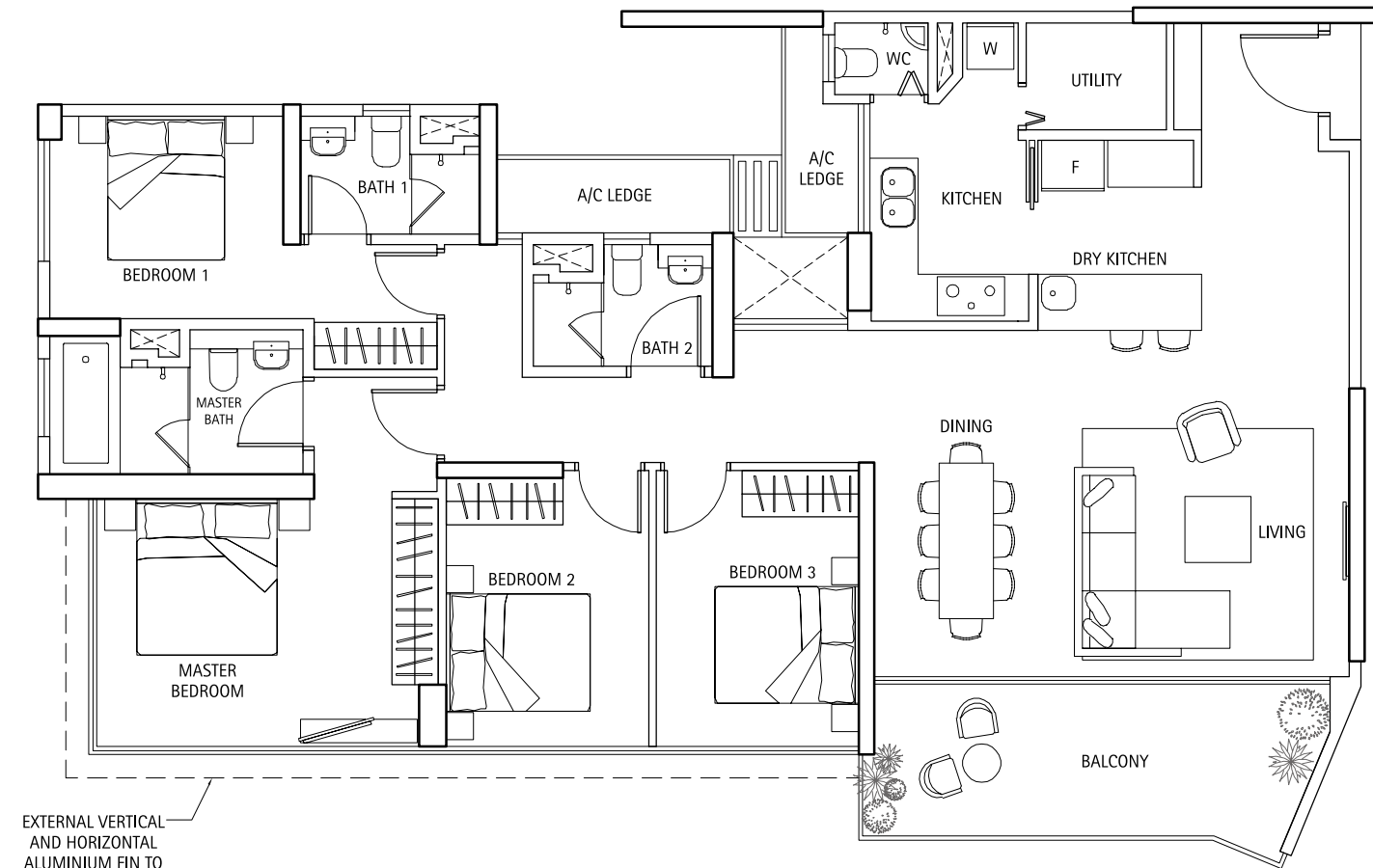


The plans are subject to change as may be required or approved by the relevant authorities. Areas are estimates only and are subject to final survey. Plans are not drawn to scale.

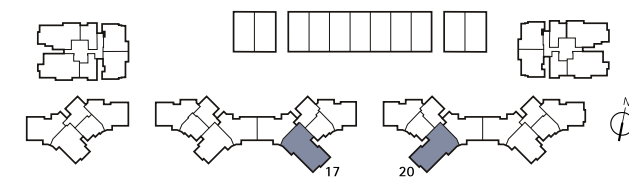
Type E (4 Bedroom)

146 sq m / 1,572 sq ft

#02-17 to #19-17, #02-20 to #18-20



EXTERNAL VERTICAL AND HORIZONTAL ALUMINIUM FIN TO ARCHITECT'S DETAIL

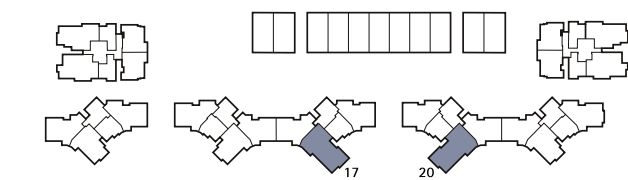
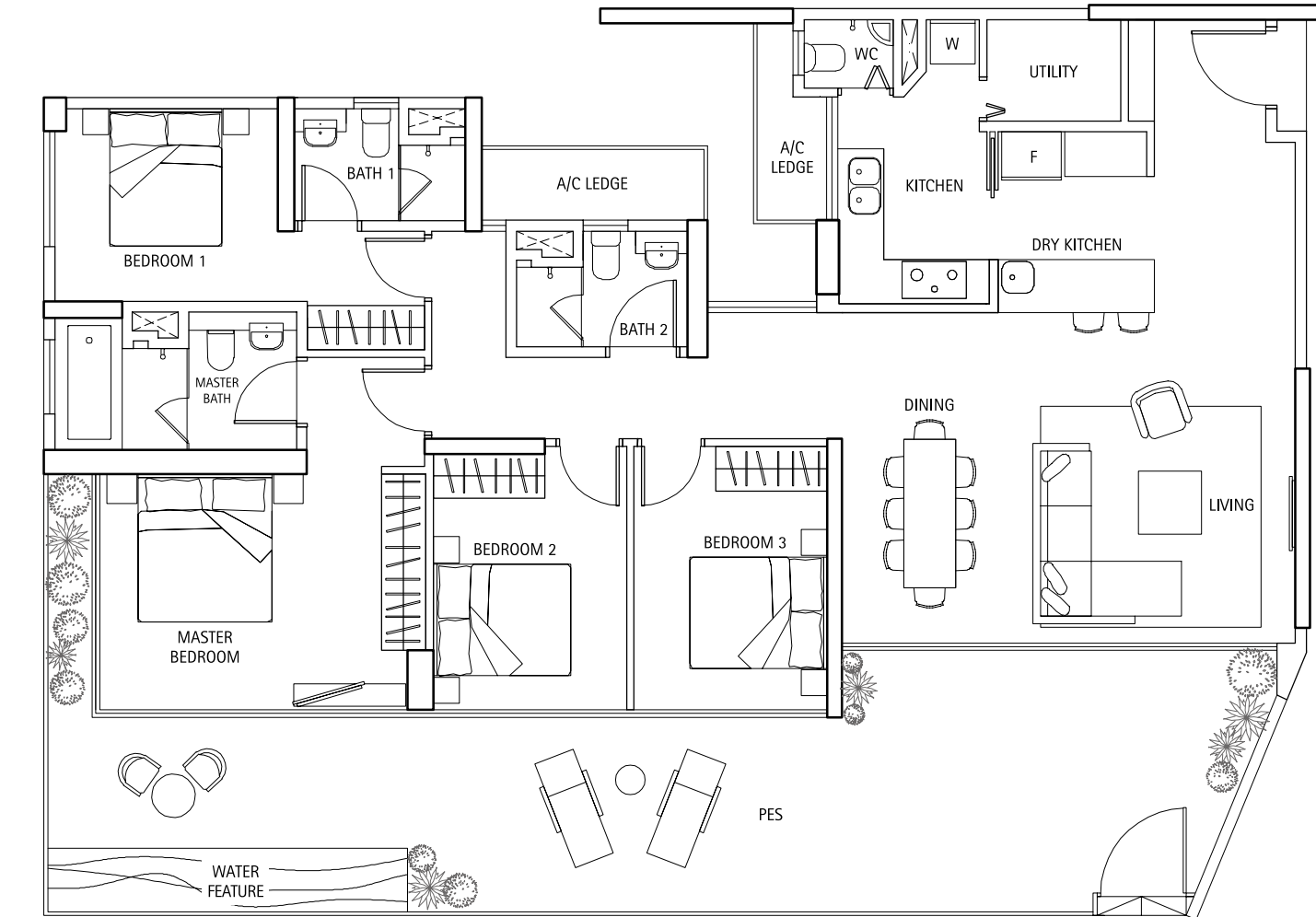


The plans are subject to change as may be required or approved by the relevant authorities. Areas are estimates only and are subject to final survey. Plans are not drawn to scale.

Type EG (4 Bedroom)

184 sq m / 1,981 sq ft

#01-17, #01-20

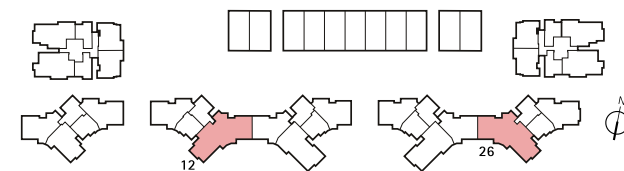
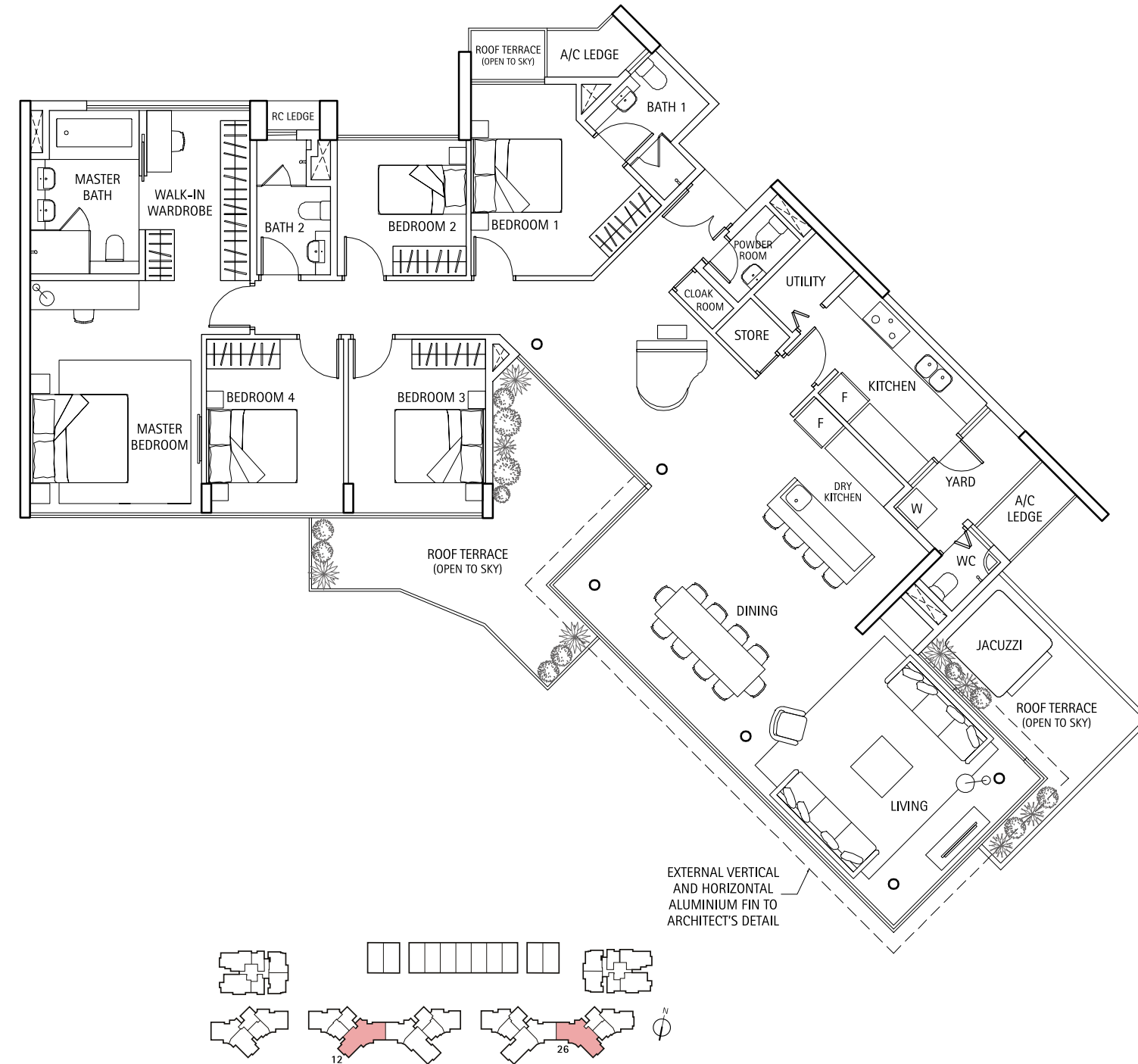


The plans are subject to change as may be required or approved by the relevant authorities. Areas are estimates only and are subject to final survey. Plans are not drawn to scale.

Type PH1

222 sq m / 2,390 sq ft

#20-12, #19-26

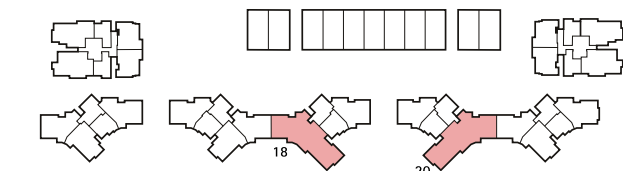


The plans are subject to change as may be required or approved by the relevant authorities. Areas are estimates only and are subject to final survey. Plans are not drawn to scale.

Type PH2

262 sq m / 2,820 sq ft

#20-18, #19-20

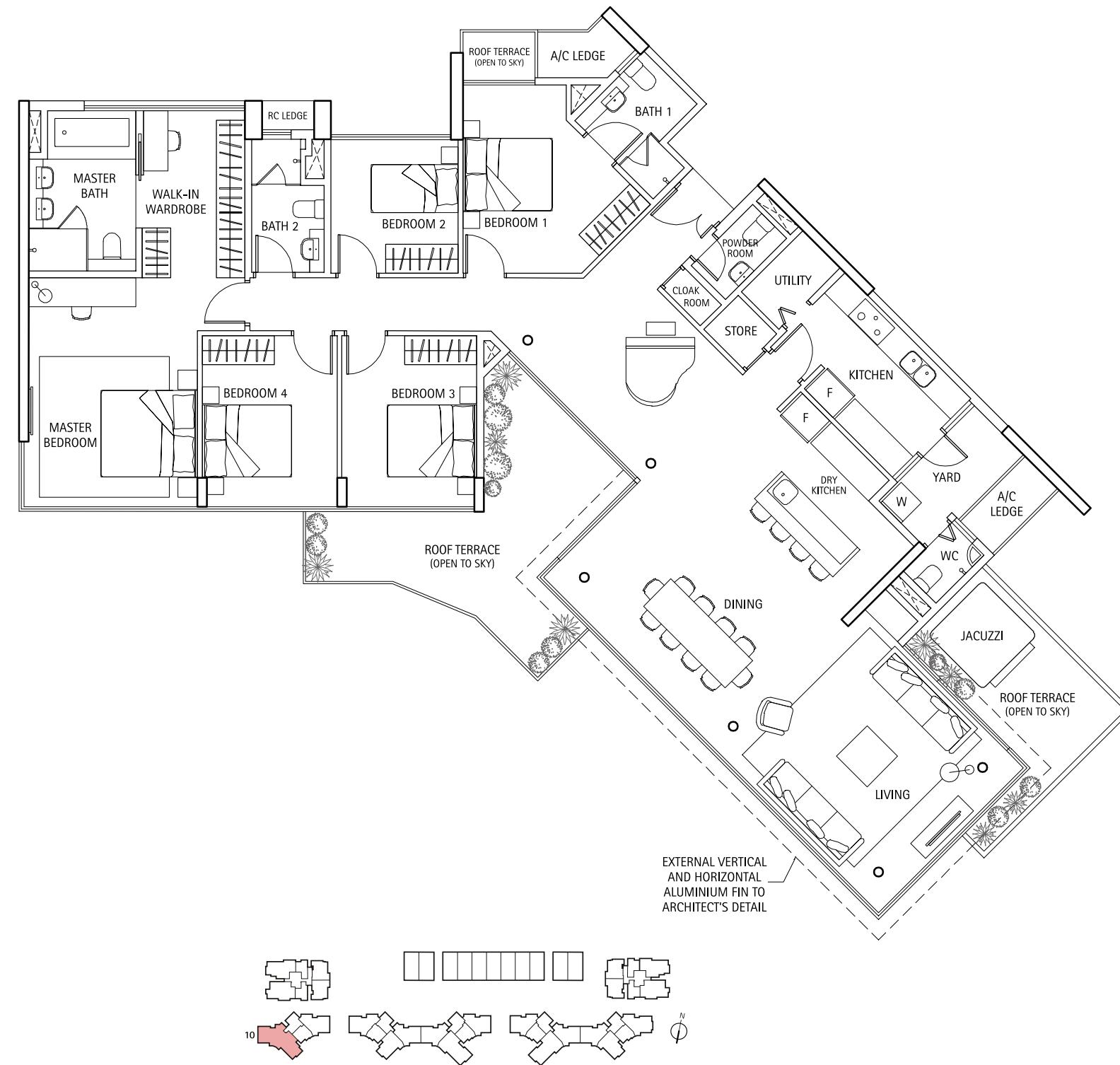


The plans are subject to change as may be required or approved by the relevant authorities. Areas are estimates only and are subject to final survey. Plans are not drawn to scale.

Type PH3

222 sq m / 2,390 sq ft

#20-10



The plans are subject to change as may be required or approved by the relevant authorities. Areas are estimates only and are subject to final survey. Plans are not drawn to scale.

From a dedicated team who believes in creating masterpieces

Founded in 1963, UOL is one of Singapore's leading public-listed property companies with an extensive portfolio of investment and development properties, hotels and serviced suites.

We are committed to making every development a masterpiece. This unwavering dedication to design and quality excellence is reflected in all our projects, winning us awards such as the FIABCI Prix d'Excellence Award, the Aga Khan Award for Architecture, the International Architecture Award, Singapore's very own President's Design Award and the International Highrise Award (a top-five finalist).

Our impressive portfolio of residential developments includes Nassim Park Residences, Duchess Residences, Pavilion 11, One-North Residences, Newton Suites, 1 Moulmein Rise, The Regency at Tiong Bahru and Southbank.

Through our listed hotel subsidiary, Pan Pacific Hotels Group Limited (PPHG), we own two acclaimed brands namely "Pan Pacific" and "Parkroyal". PPHG now owns, manages and/or markets over 25 hotels and serviced suites in Asia, Australia and North America with more than 8000 rooms in its portfolio.

